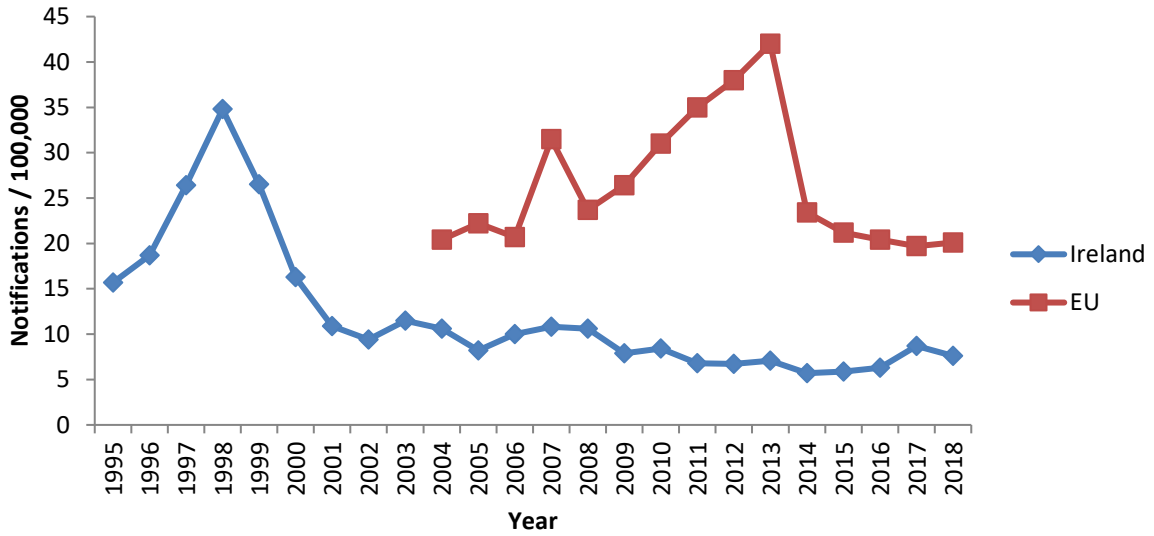


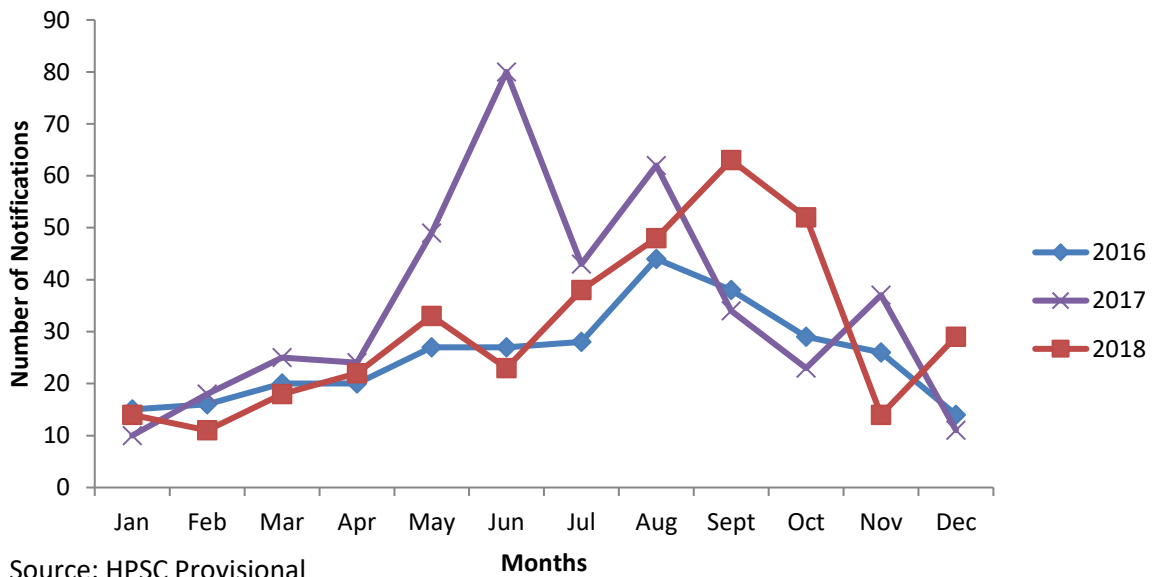
## Salmonellosis in Humans 2018

**Figure 1. Crude Incidence Rate of Salmonellosis Notifications per 100,000 Population in Ireland from 1995 to 2018 and in the EU from 2004 to 2018**



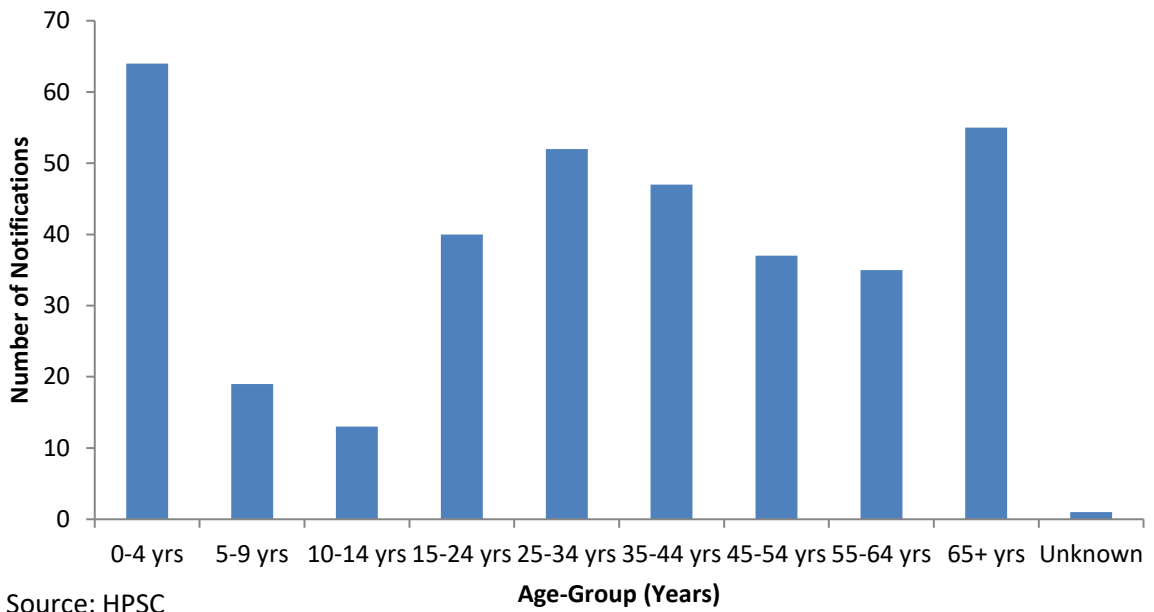
Source: HPSC & EFSA/ECDC

**Figure 2. Seasonal Distribution of Salmonellosis Notifications in Ireland in 2016, 2017 and 2018**

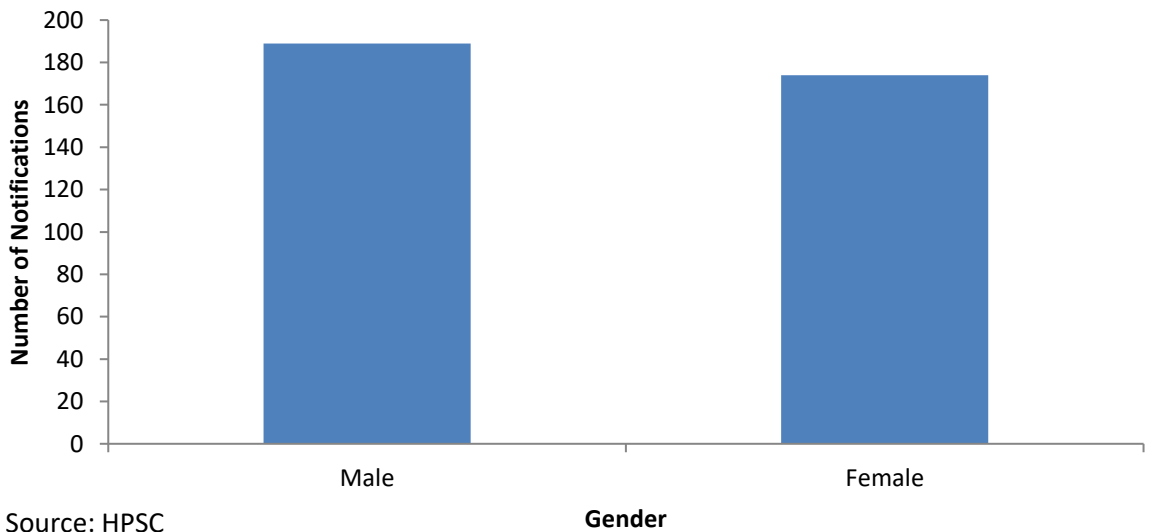


Source: HPSC Provisional

**Figure 3. Number of notifiable cases of Salmonellosis by age group in Ireland, 2018**



**Figure 4. Number of notifiable cases of Salmonellosis by gender in Ireland, 2018**



**Table 1. *Salmonella* outbreaks in humans in 2018**

Summary		Outbreak settings		Mode of transmission	
Total no. of outbreaks	5	General*	2	Animal	1
No. of cases of illness due to outbreaks	29	Family**	3	Person to Person (P2P)	3
				Foodborne/P2P	1
				Unknown	8

\*includes community, educational and healthcare settings

\*\*includes private house and extended family settings

Source: HPSC

**Table 2: Serotype distribution of Irish<sup>1</sup> *Salmonella* isolates from humans referred to the NSSLRL in 2018**

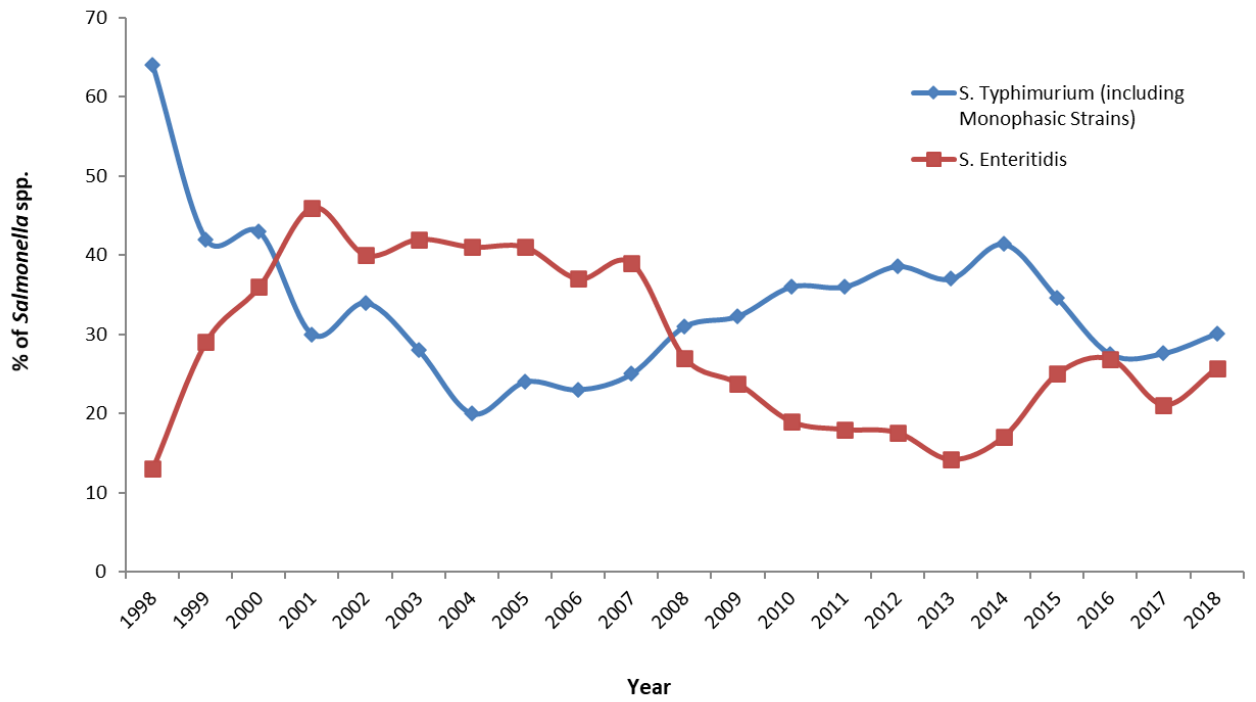
Serotype	Number of isolates (%)
Typhimurium*	38 (44.2)
Enteritidis	18 (20.9)
Newport	6 (7.0)
Infantis	3 (3.5)
Brandenburg	2 (2.3)
Coeln	2 (2.3)
Kentucky	1 (1.2)
Unnamed	1 (1.2)
Teitelkebir	1 (1.2)
Litchfield	1 (1.2)
Bovismorbificans	1 (1.2)
Braenderup	1 (1.2)
Bredeney	1 (1.2)
Schwarzengrund	1 (1.2)
Ruiru	1 (1.2)
Durham	1 (1.2)
Stanley	1 (1.2)
Agama	1 (1.2)
Ajiobo	1 (1.2)
Virchow	1 (1.2)
Bochum	1 (1.2)
Idikan	1 (1.2)
Give	1 (1.2)
<b>Total</b>	<b>86</b>

<sup>1</sup> Excluding isolates (n=277) associated with foreign travel or unknown isolates from 2018

\*Includes *S. Typhimurium* monophasic variant 4, [5], 12:l:- isolates (n=15)

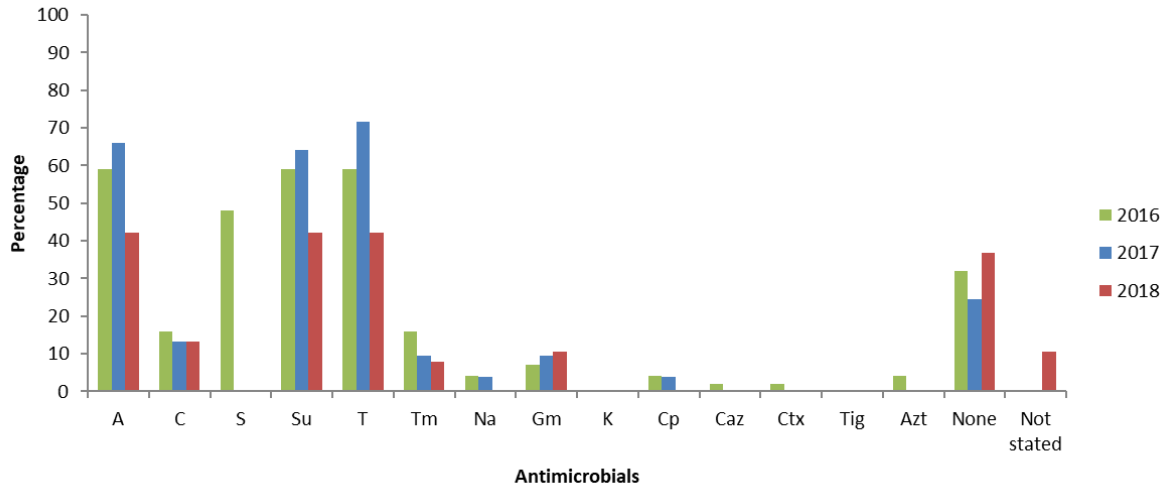
Source: NSSLRL

Figure 5. Percentage of *S. Typhimurium* and *S. Enteritidis* isolates referred to the NSSLRL from 1998 to 2018



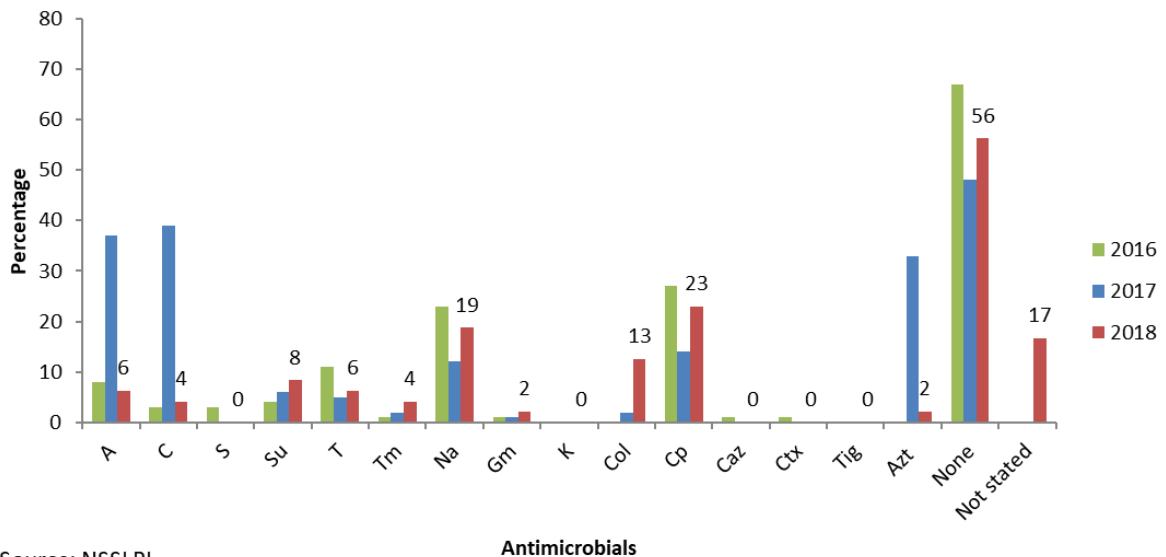
Source: NSSLRL & HPSC

**Figure 6. Antimicrobial resistance in Irish\* clinical isolates\*\* referred to the NSSLRL of *S. Typhimurium* in 2016 (n=56), 2017 (n=53) and 2018 (n=38)**



Source: NSSLRL

**Figure 7. Antimicrobial resistance in Irish\* clinical isolates\*\* referred to the NSSLRL of Non-Typhimurium *Salmonella* spp 2016 (n=73), 2017 (n=100) and 2018 (n=48)**



Source: NSSLRL

\*Excluding isolates (n=277) associated with foreign travel or unknown isolates from 2018

\*\*Isolated from faeces, blood and urine, abscesses, gallbladders, pus, pus R distal tibia

\*\*\*Includes the monophasic variant of *Salmonella* Typhimurium

Ampicillin (A); Chloramphenicol (C); Streptomycin (S); Sulphonamides (Su); Tetracycline (T); Trimethoprim (Tm); Nalidixic acid (Na); Gentamycin (Gm); Kanamycin (K); Colistin (Col); Ciprofloxacin (Cp); Ceftazidime (Caz) and Cefotaxime (Ctx); Tigecycline (Tig); Azithromycin (Azt)

## References:

**HPSC:** Health Protection Surveillance Centre. Annual Epidemiological Report 2018.  
<https://www.hpsc.ie/abouthpsc/annualreports/>

**EFSA/ECDC:** European Food Safety Authority and European Centre for Disease Prevention and Control. The European Union One Health 2018 Zoonoses Report.  
<http://www.efsa.europa.eu/en/efsajournal/pub/5926>

**HPSC:** Health Protection Surveillance Centre. Surveillance of Infectious Intestinal (IID), Zoonotic and Vectorborne Disease, and Outbreaks of Infectious Disease Quarterly Reports, 2018.  
<https://www.hpsc.ie/a-z/gastroenteric/gastroenteritisiid/surveillance/surveillance-reports/iid-and-zoonotic-disease-quarterly-reports-2014-2018/2018/>