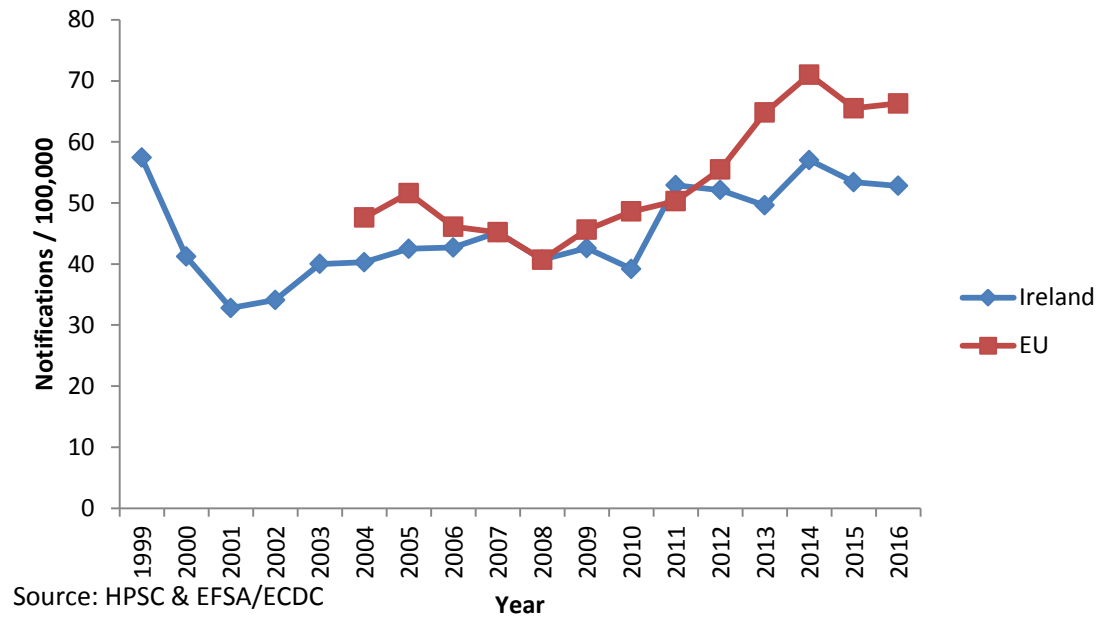
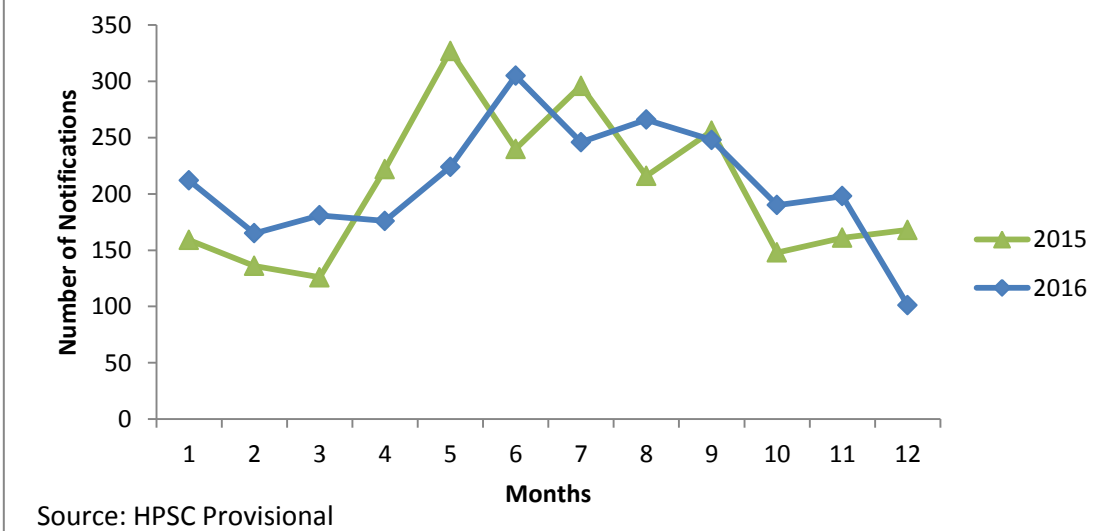


## Campylobacteriosis in Humans 2016

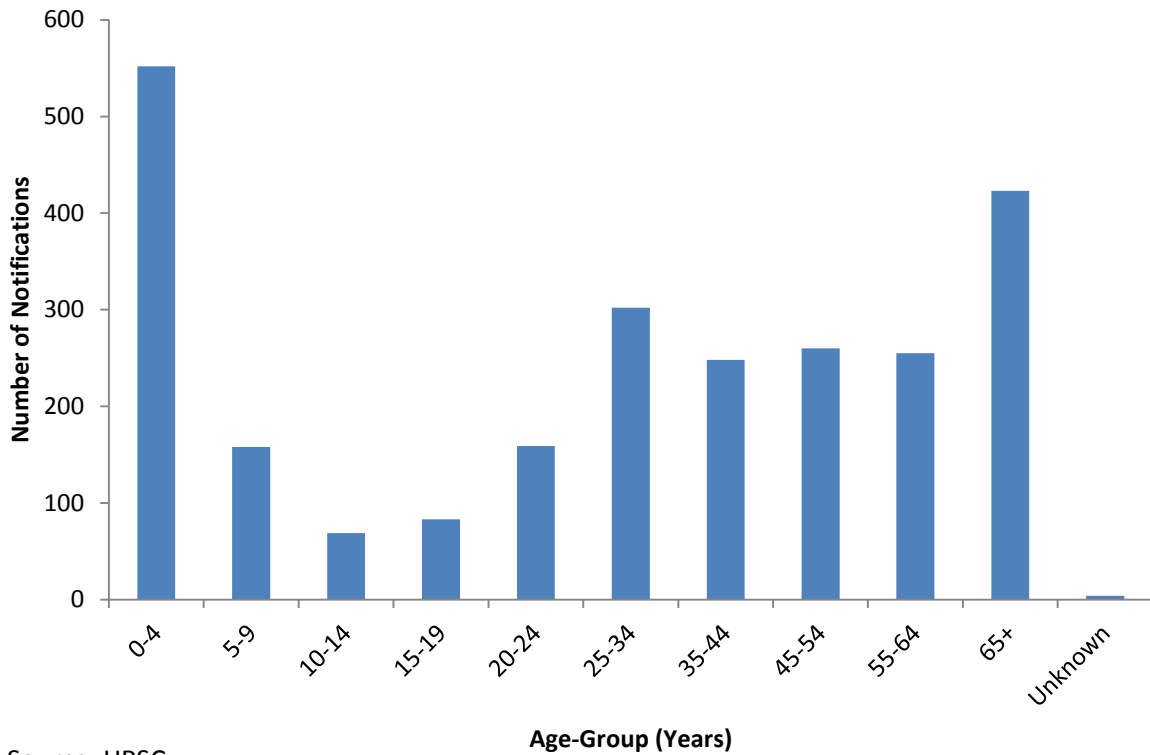
**Figure 1. Crude Incidence Rate of campylobacteriosis notifications per 100,000 population in Ireland from 1999 to 2016 and EU from 2004 to 2016**



**Figure 2. Seasonal Distribution of Campylobacteriosis Notifications in Ireland 2015 vs 2016**

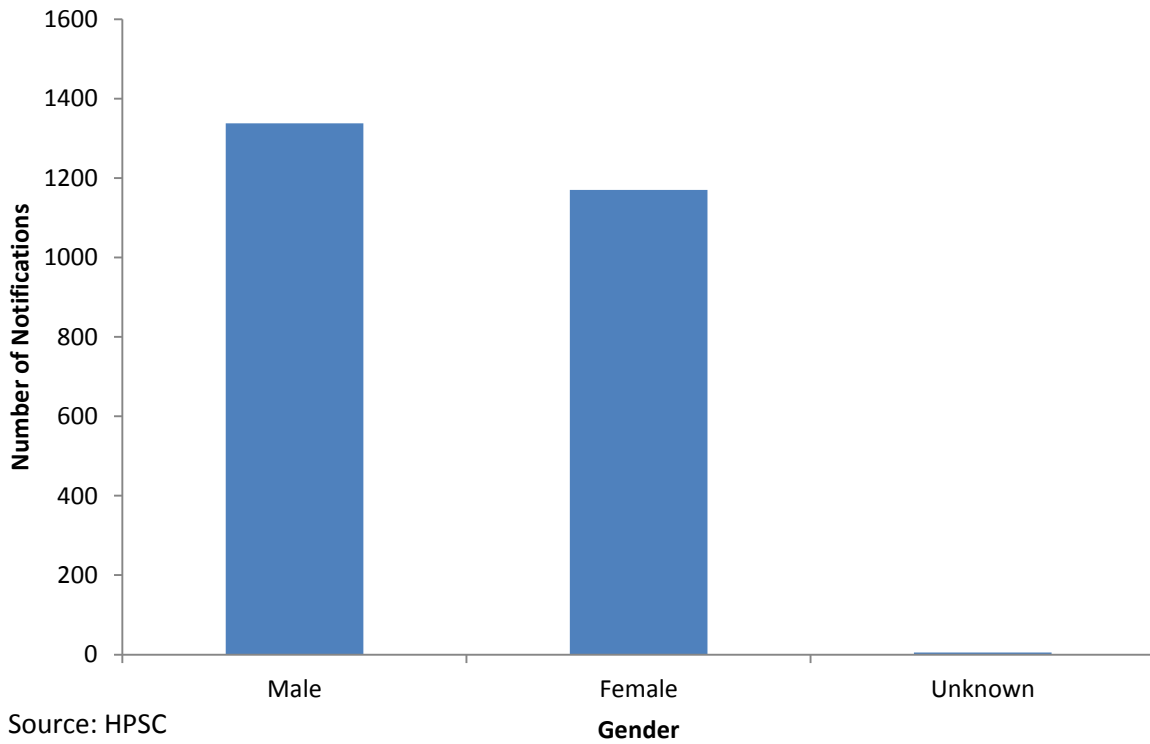


**Figure 3. Number of campylobacteriosis notifications in Ireland by age-group, 2016**



Source: HPSC

**Figure 4. Number of campylobacteriosis notifications in Ireland by gender, 2016**



Source: HPSC

**Sources of data:**

**HPSC:** Health Protection Surveillance Centre. Annual Epidemiological Report 2016.

<http://www.hpsc.ie/abouthpsc/annualreports/HSE%20HPSC%20Annual%20Report%20ready%202016.pdf>

**EFSA/ECDC:** European Food Safety Authority and European Centre for Disease Prevention and Control. The European Union summary report on trends and sources of zoonoses, zoonotic agents and food-borne outbreaks in 2016.

<http://onlinelibrary.wiley.com/doi/10.2903/j.efsa.2017.5077/epdf>

**HPSC (Provisional):** Health Protection Surveillance Centre. Surveillance of Infectious Intestinal (IID), Zoonotic and Vectorborne Disease, and Outbreaks of Infectious Disease Quarterly Reports, 2016 (Provisional Data).

<http://www.hpsc.ie/a->

[z/gastroenteric/gastroenteritisoriid/publications/iidandzoonoticdiseasequarterlyreports/2016/](http://www.hpsc.ie/a-z/gastroenteric/gastroenteritisoriid/publications/iidandzoonoticdiseasequarterlyreports/2016/)